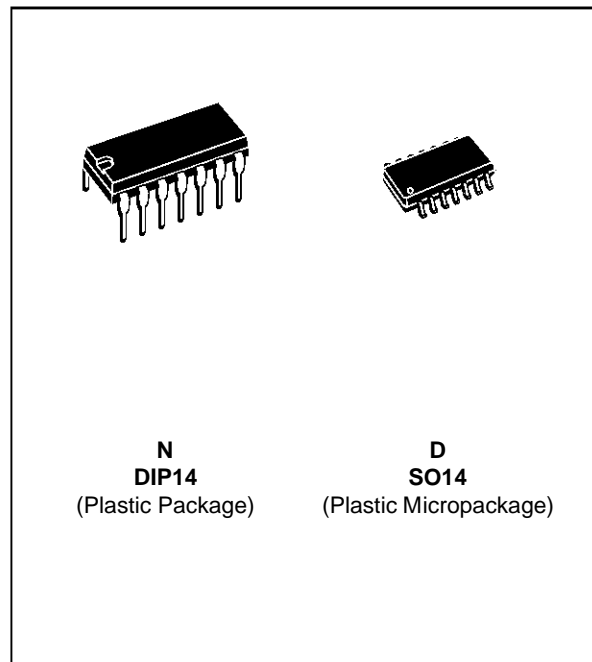


## DUAL CMOS OPERATIONAL AMPLIFIER AND DUAL CMOS COMPARATOR

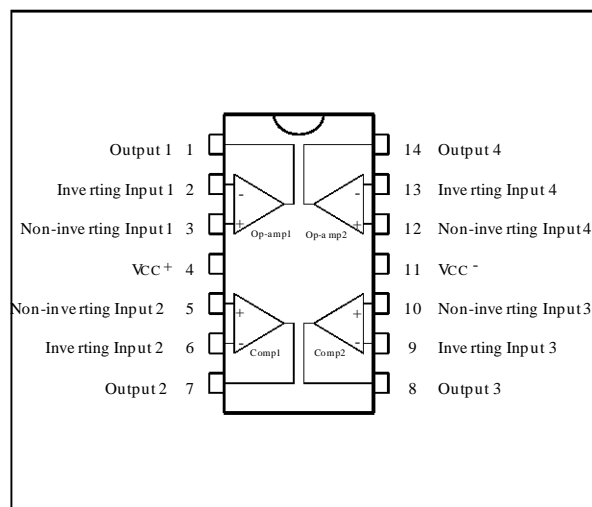
- SINGLE SUPPLY OPERATION FROM **2.7V TO 16V**
  - LOW SUPPLY CURRENT: 500 $\mu$ A (total package with  $V_{CC} = 5V$ )
  - LATCH - UP IMMUNITY
- OPERATIONAL AMPLIFIERS**
- RAIL TO RAIL INPUT AND OUTPUT
  - EXTREMELY LOW INPUT BIAS CURRENT : 1pA TYP.
  - 1MHz TYPICAL GAIN BANDWIDTH PRODUCT
  - SPECIFIED FOR 600 $\Omega$  OUTPUT LOAD
- COMPARATORS**
- PUSH-PULL OUTPUT (no external pull-up resistor required)
  - EXTREMELY LOW INPUT BIAS CURRENT : 1pA TYP.
  - EXTREMELY LOW INPUT OFFSET CURRENT : 1pA TYP.
  - INPUT COMMON-MODE VOLTAGE RANGE INCLUDES GROUND
  - HIGH INPUT IMPEDANCE : 10<sup>12</sup> typ.
  - FAST RESPONSE TIME : 2 $\mu$ s TYP. FOR 5mV OVERDRIVE
- SPICE **MACROMODEL** INCLUDED IN THIS SPECIFICATION



### ORDER CODES

Part Number	Temperature Range	Package	
		N	D
TSM221I	-40, +125°C	•	•

### PIN CONNECTIONS (top view)



### DESCRIPTION

The TSM221 contains two differential-input CMOS rail to rail operational amplifiers and two push-pull CMOS comparators. This mixed circuit is a general purpose analog block for automotive, telecom and consumer applications

**ABSOLUTE MAXIMUM RATINGS (OPERATIONAL AMPLIFIERS)**

Symbol	Parameter	Value	Unit
$V_{CC}$	Supply Voltage - (note 1)	18	V
$V_{id}$	Differential Input Voltage - (note 2)	$\pm 18$	V
$V_i$	Input Voltage - (note 3)	-0.3 to 18	V
$I_{in}$	Current on Inputs (Op-Amps)	$\pm 50$	mA
$I_o$	Current on Outputs (Op-Amps)	$\pm 130$	mA
$T_{oper}$	Operating Free Air Temperature Range	-40 to +125	$^{\circ}C$
$T_{stg}$	Storage Temperature	-65 to +125	$^{\circ}C$

**ABSOLUTE MAXIMUM RATINGS (COMPARATORS)**

Symbol	Parameter	Value	Unit
$V_{CC}$	Supply Voltage - (note 1)	18	V
$V_{id}$	Differential Input Voltage - (note 2)	$\pm 18$	V
$V_i$	Input Voltage - (note 4)	-0.3 to 18	V
$V_O$	Output Voltage	18	V
$I_o$	Output Current (Comparators)	20	mA
$T_{oper}$	Operating Free Air Temperature Range	-40 to +125	$^{\circ}C$
$T_{stg}$	Storage Temperature	-65 to +125	$^{\circ}C$

- Notes :**
1. All voltages values, except differential voltage are with respect to network ground terminal.
  2. Differential voltages are non-inverting input terminal with respect to the inverting input terminal.
  3. The magnitude of input and output voltages must never exceed  $(V_{CC}^+) + 0.3V$ .
  4. The magnitude of input and output voltages must never exceed the magnitude of the positive supply voltage.
  5. Short-circuits from outputs to  $V_{CC}^+$  can cause excessive heating and eventual destruction.

**OPERATING CONDITIONS**

Symbol	Parameter	Value	Unit
$V_{CC}$	Supply Voltage	2.7 to 16	V
$V_{icm}$	Common Mode Input Voltage Range (Op-Amps)	$V_{dd} - 0.2$ to $V_{CC} + 0.2$	V
$V_{icm}$	Common Mode Input Voltage Range (Comparators)	0 to $V_{CC}^+ - 1.5$	V

## OPERATIONAL AMPLIFIERS

### ELECTRICAL CHARACTERISTICS

$V_{CC}^+ = 5V$ ,  $V_{CC}^- = 0V$ ,  $R_L, C_L$  connected to  $V_{CC}/2$ ,  $T_{amb} = 25^\circ C$  (unless otherwise specified)

Symbol	Parameter	Test Condition	Min.	Typ.	Max.	Unit
$V_{io}$	Input Offset Voltage	$T_{min.} \leq T_{amb} \leq T_{max.}$			10 12	mV
$DV_{io}$	Input Offset Voltage Drift			5		$\mu V/^\circ C$
$I_{io}$	Input Offset Current - (note 1)	$T_{min.} \leq T_{amb} \leq T_{max.}$		1	100 200	pA
$I_{ib}$	Input Bias Current - (note 1)	$T_{min.} \leq T_{amb} \leq T_{max.}$		1	150 300	pA
$V_{OH}$	High Level Output Voltage R1 connected to $V_{CC}/2$	$R_L = 10k$ $R_L = 600\Omega$ $R_L = 100\Omega$	4.90 4.25	4.95 4.55 3.7		V
$V_{OL}$	Low Level Output Voltage R1 connected to $V_{CC}/2$	$R_L = 10k$ $R_L = 600\Omega$ $R_L = 100\Omega$		40 350 1400	100 500	mV
$A_{vd}$	Large Signal Voltage Gain	$R_L = 10k\Omega$ , $V_O = 1.5V$ to $3.5V$ $T_{min.} \leq T_{amb} \leq T_{max.}$	10 7	50		V/mV
$I_{CC}$	Total Supply Current- (note 2)	No load		500	800	$\mu A$
GBP	Gain Bandwidth Product	$A_{VCL} = 100$ , $R_L = 10k$ , $C_L = 100pF$ , $f = 100kHz$		1		MHz
CMR	Common Mode Rejection Ratio	$V_{ic} = 1.5$ to $3.5V$ , $V_o = 2.5V$	60	85		dB
SVR	Supply Voltage Rejection Ratio	$V_{CC}^+ = 3V$ to $5V$ , $V_o = V_{CC}^- / 2$	55	80		dB
$I_o$	Output Short Circuit Current	$V_o = V_{CC}^-$	45	65		mA
$I_{sink}$	Output Sink Current	$V_o = V_{CC}^+$	45	65		mA
SR	Slew Rate	$A_{VCL} = 1$ , $R_L = 10k$ , $C_L = 100pF$ , $V_i = 1V$ to $4V$		0.7		V/ $\mu s$
$\phi_m$	Phase Margin			30		Degrees
$e_n$	Equivalent Input Noise Voltage	$R_s = 100\Omega$ , $f = 1kHz$		30		$\frac{nV}{\sqrt{Hz}}$
$C_s$	Channel Separation	$f = 1kHz$		120		dB

**Note 1 :** Maximum values including unavoidable inaccuracies of the industrial test.

**Note 2 :** Op-amps and comparators

**OPERATIONAL AMPLIFIERS  
ELECTRICAL CHARACTERISTICS**

$V_{CC}^+ = 3V, V_{CC}^- = 0V, R_L, C_L$  connected to  $V_{CC}/2, T_{amb} = 25^\circ C$  (unless otherwise specified)

Symbol	Parameter	Test Condition	Min.	Typ.	Max.	Unit
$V_{io}$	Input Offset Voltage	$T_{min.} \leq T_{amb} \leq T_{max.}$			10 12	mV
$DV_{io}$	Input Offset Voltage Drift			5		$\mu V/^\circ C$
$I_{io}$	Input Offset Current - (note 1)	$T_{min.} \leq T_{amb} \leq T_{max.}$		1	100 200	pA
$I_{ib}$	Input Bias Current - (note 1)	$T_{min.} \leq T_{amb} \leq T_{max.}$		1	150 300	pA
$V_{OH}$	High Level Output Voltage R1 connected to $V_{CC}/2$	$R_L = 10k$ $R_L = 600\Omega$ $R_L = 100\Omega$	2.90 2.30	2.96 2.60 2		V
$V_{OL}$	Low Level Output Voltage R1 connected to $V_{CC}/2$	$R_L = 10k$ $R_L = 600\Omega$ $R_L = 100\Omega$		30 300 900	70 400	mV
$A_{vd}$	Large Signal Voltage Gain	$R_L = 10k\Omega, V_O = 1.5V$ to 3.5V $T_{min.} \leq T_{amb} \leq T_{max.}$	3 2	10		V/mV
$I_{CC}$	Total Supply Current- (note 2)	No load		415	600	$\mu A$
GBP	Gain Bandwidth Product	$A_{VCL} = 100, R_L = 10k,$ $C_L = 100pF, f = 100kHz$		0.8		MHz
CMR	Common Mode Rejection Ratio	$V_{ic} = 0$ to 3V, $V_o = 1.5V$	50	80		dB
SVR	Supply Voltage Rejection Ratio	$V_{CC}^+ = 2.7V$ to 3.3V, $V_o = V_{CC} / 2$	50	80		dB
$I_o$	Output Short Circuit Current	$V_o = V_{CC}^-$	20	40		mA
$I_{sink}$	Output Sink Current	$V_o = V_{CC}^+$	20	40		mA
SR	Slew Rate	$A_{VCL} = 1, R_L = 10k,$ $C_L = 100pF, V_i = 1.3V$ to 1.7V		0.3		V/ $\mu s$
$\phi_m$	Phase Margin			30		Degrees
$e_n$	Equivalent Input Noise Voltage	$R_s = 100\Omega, f = 1kHz$		30		$\frac{nV}{\sqrt{Hz}}$
$C_s$	Channel Separation	$f = 1kHz$		120		dB

**Note 1 :** Maximum values including unavoidable inaccuracies of the industrial test.

**Note 2 :** Op-amps and comparators

**Applies to : TSM221**

```

** Standard Linear Ics Macromodels, 1993.
** CONNECTIONS :
* 1 INVERTING INPUT
* 2 NON-INVERTING INPUT
* 3 OUTPUT
* 4 POSITIVE POWER SUPPLY
* 5 NEGATIVE POWER SUPPLY
.SUBCKT TSM2213V 1 3 2 4 5 (analog)
*****
.MODEL MDTH D IS=1E-8 KF=6.564344E-14 CJO=10F
* INPUT STAGE
CIP 2 5 1.000000E-12
CIN 1 5 1.000000E-12
EIP 10 5 2 5 1
EIN 16 5 1 5 1
RIP 10 11 6.500000E+00
RIN 15 16 6.500000E+00
RIS 11 15 1.271505E+01
DIP 11 12 MDTH 400E-12
DIN 15 14 MDTH 400E-12
VOFP 12 13 DC 0.000000E+00
VOFN 13 14 DC 0
IPOL 13 5 4.000000E-05
CPS 11 15 2.125860E-08
DINN 17 13 MDTH 400E-12
VIN 17 5 0.000000E+00
DINR 15 18 MDTH 400E-12
VIP 4 18 0.000000E+00
FCP 4 5 VOFP 5.000000E+00
FCN 5 4 VOFN 5.000000E+00
* AMPLIFYING STAGE
FIP 5 19 VOFP 2.750000E+02
FIN 5 19 VOFN 2.750000E+02
RG1 19 5 1.916825E+05
RG2 19 4 1.916825E+05
CC 19 29 2.200000E-08
HZTP 30 29 VOFP 1.3E+03
HZTN 5 30 VOFN 1.3E+03
DOPM 19 22 MDTH 400E-12
DONM 21 19 MDTH 400E-12
HOPM 22 28 VOUT 3800
VIPM 28 4 150
HONM 21 27 VOUT 3800
VINM 5 27 150
EOUT 26 23 19 5 1
VOUT 23 5 0
ROUT 26 3 75
COUT 3 5 1.000000E-12
DOP 19 68 MDTH 400E-12
VOP 4 25 1.724
HSCP 68 25 VSCP1 0.8E8
DON 69 19 MDTH 400E-12
VON 24 5 1.7419107
HSCN 24 69 VSCN1 0.8E+08
VSCTHP 60 61 0.0875
** VSCTHP = le seuil au dessus de vio * 500
** c.a.d 275U-000U dus a l'offset
DSCP1 61 63 MDTH 400E-12
VSCP1 63 64 0
ISCP 64 0 1.000000E-8
DSCP2 0 64 MDTH 400E-12
DSCN2 0 74 MDTH 400E-12
ISCN 74 0 1.000000E-8
VSCN1 73 74 0
DSCN1 71 73 MDTH 400E-12
VSCTHN 71 70 -0.55
** VSCTHN = le seuil au dessous de vio * 2000
** c.a.d -375U-000U dus a l'offset
ESCP 60 0 2 1 500
ESCN 70 0 2 1 -2000
.ENDS

```

**ELECTRICAL CHARACTERISTICS**  $V_{CC}^+ = 3V$ ,  $V_{CC}^- = 0V$ ,  $R_L, C_L$  connected to  $V_{CC}/2$ , standby off,  $T_{amb} = 25^\circ C$ , unless otherwise specified

Symbol	Conditions	Value	Unit
$V_{io}$		0	mV
$A_{vd}$	$R_L = 10k\Omega$	10	V/mV
$I_{CC}$	No load, per operator	200	$\mu A$
$V_{icm}$		-0.2 to 3.2	V
$V_{OH}$	$R_L = 10k\Omega$	2.96	V
$V_{OL}$	$R_L = 10k\Omega$	30	mV
$I_{sink}$	$V_O = 3V$	40	mA
$I_{source}$	$V_O = 0V$	40	mA
GBP	$R_L = 10k\Omega, C_L = 100pF$	0.8	MHz
SR	$R_L = 10k\Omega, C_L = 100pF$	0.3	V/ $\mu s$

## TSM221

### Applies to : TSM221

```

** Standard Linear Ics Macromodels, 1993.
** CONNECTIONS :
* 1 INVERTING INPUT
* 2 NON-INVERTING INPUT
* 3 OUTPUT
* 4 POSITIVE POWER SUPPLY
* 5 NEGATIVE POWER SUPPLY
* 6 STANDBY
.SUBCKT TSM2215V 1 3 2 4 5 (analog)
*****
.MODEL MDTH D IS=1E-8 KF=6.564344E-14 CJO=10F
* INPUT STAGE
CIP 2 5 1.000000E-12
CIN 1 5 1.000000E-12
EIP 10 5 2 5 1
EIN 16 5 1 5 1
RIP 10 11 6.500000E+00
RIN 15 16 6.500000E+00
RIS 11 15 7.322092E+00
DIP 11 12 MDTH 400E-12
DIN 15 14 MDTH 400E-12
VOFP 12 13 DC 0.000000E+00
VOFN 13 14 DC 0
IPOL 13 5 4.000000E-05
CPS 11 15 2.498970E-08
DINN 17 13 MDTH 400E-12
VIN 17 5 0.000000E+00
DINR 15 18 MDTH 400E-12
VIP 4 18 0.000000E+00
FCP 4 5 VOFP 5.750000E+00
FCN 5 4 VOFN 5.750000E+00
ISTB0 5 4 500N
* AMPLIFYING STAGE
FIP 5 19 VOFP 4.400000E+02
FIN 5 19 VOFN 4.400000E+02
RG1 19 5 4.904961E+05
RG2 19 4 4.904961E+05
CC 19 29 2.200000E-08
HZTP 30 29 VOFP 1.8E+03
HZTN 5 30 VOFN 1.8E+03
DOPM 19 22 MDTH 400E-12
DONM 21 19 MDTH 400E-12
HOPM 22 28 VOUT 3800
VIPM 28 4 230
HONM 21 27 VOUT 3800
VINM 5 27 230
EOUT 26 23 19 5 1
VOUT 23 5 0
ROUT 26 3 82
COUT 3 5 1.000000E-12
DOP 19 68 MDTH 400E-12
VOP 4 25 1.724
HSCP 68 25 VSCP1 0.8E+08
DON 69 19 MDTH 400E-12
VON 24 5 1.7419107
HSCN 24 69 VSCN1 0.8E+08
VSCTHP 60 61 0.0875
** VSCTHP = le seuil au dessus de vio * 500
** c.a.d 275U-000U dus a l'offset
DSCP1 61 63 MDTH 400E-12
VSCP1 63 64 0
ISCP 64 0 1.000000E-8
DSCP2 0 64 MDTH 400E-12
DSCN2 0 74 MDTH 400E-12
ISCN 74 0 1.000000E-8
VSCN1 73 74 0
DSCN1 71 73 MDTH 400E-12
VSCTHN 71 70 -0.55
** VSCTHN = le seuil au dessous de vio * 2000
** c.a.d -375U-000U dus a l'offset
ESCP 60 0 2 1 500
ESCN 70 0 2 1 -2000
.ENDS

```

**ELECTRICAL CHARACTERISTICS**  $V_{CC}^+ = 5V$ ,  $V_{CC}^- = 0V$ ,  $R_L, C_L$  connected to  $V_{CC}/2$ , standby off,  $T_{amb} = 25^\circ C$ , unless otherwise specified

Symbol	Conditions	Value	Unit
$V_{io}$		0	mV
$A_{vd}$	$R_L = 10k\Omega$	50	V/mV
$I_{CC}$	No load, per operator	230	$\mu A$
$V_{icm}$		-0.2 to 5.2	V
$V_{OH}$	$R_L = 10k\Omega$	4.95	V
$V_{OL}$	$R_L = 10k\Omega$	40	mV
$I_{sink}$	$V_O = 5V$	65	mA
$I_{source}$	$V_O = 0V$	65	mA
GBP	$R_L = 10k\Omega, C_L = 100pF$	1	MHz
SR	$R_L = 10k\Omega, C_L = 100pF$	0.8	V/ $\mu s$

**COMPARATORS****ELECTRICAL CHARACTERISTICS**

$V_{CC}^+ = 5V$ ,  $V_{CC}^- = 0V$ ,  $T_{amb} = 25^\circ C$  (unless otherwise specified)

Symbol	Parameter	Test Condition	Min.	Typ.	Max.	Unit
$V_{io}$	Input Offset Voltage - (note 1) $T_{min.} \leq T_{amb} \leq T_{max.}$	$V_{ic} = V_{icm \text{ min.}}$ $V_{CC}^+ = 5V \text{ to } 10V$			5 6.5	mV
$I_{io}$	Input Offset Current - (note 2) $T_{min.} \leq T_{amb} \leq T_{max.}$			1	300	pA
$I_{ib}$	Input Bias Current - (note 2) $T_{min.} \leq T_{amb} \leq T_{max.}$			1	600	pA
$V_{OH}$	High Level Output Voltage $T_{min.} \leq T_{amb} \leq T_{max.}$	$V_{id} = 1V$ , $I_{oh} = -4mA$	4.5 4.3	4.7		V
$V_{OL}$	Low Level Output Voltage $T_{min.} \leq T_{amb} \leq T_{max.}$	$V_{id} = -1V$ , $I_{oh} = 4mA$		220	300 375	mV
$V_{icm}$	Input Common Mode Voltage $T_{min.} \leq T_{amb} \leq T_{max.}$		0 to $V_{CC}^+ - 1.2$ 0 to $V_{CC}^+ - 1.5$			
CMR	Common Mode Rejection Ratio	$V_{ic} = V_{icm \text{ min.}}$		82		dB
SVR	Supply Voltage Rejection Ratio	$V_{CC}^+ = 5V \text{ to } 10V$		90		dB
$T_{plh}$	Response Time Low to High Overdrive = 5mV Overdrive = 10mV Overdrive = 20mV Overdrive = 40mV TTL input	$V_{ic} = 0V$ , $f = 10kHz$ , $C_L = 50pF$	1.5 1.1 0.9 0.7 0.6			$\mu s$
$T_{phl}$	Response Time High to Low Overdrive = 5mV Overdrive = 10mV Overdrive = 20mV Overdrive = 40mV TTL input	$V_{ic} = 0V$ , $f = 10kHz$ , $C_L = 50pF$	2.2 1.6 1.1 0.75 0.17			$\mu s$
$T_f$	Fall Time	$f = 10kHz$ , $C_L = 50pF$ , overdrive 50mV		30		ns

**Note 1** : The specified offset voltage is the maximum value required to drive the output up to 4.5V or down to 0.3V.

**Note 2** : Maximum values including unavoidable inaccuracies of the industrial test.

**COMPARATORS****ELECTRICAL CHARACTERISTICS**

$V_{CC}^+ = 3V$ ,  $V_{CC}^- = 0V$ ,  $T_{amb} = 25^\circ C$  (unless otherwise specified)

Symbol	Parameter	Test Condition	Min.	Typ.	Max.	Unit
$V_{io}$	Input Offset Voltage - (note 1) $T_{min.} \leq T_{amb} \leq T_{max.}$	$V_{ic} = 1.5V$			5 6.5	mV
$I_{io}$	Input Offset Current - (note 2) $T_{min.} \leq T_{amb} \leq T_{max.}$			1	300	pA
$I_{ib}$	Input Bias Current - (note 2) $T_{min.} \leq T_{amb} \leq T_{max.}$			1	600	pA
$V_{OH}$	High Level Output Voltage $T_{min.} \leq T_{amb} \leq T_{max.}$	$V_{id} = 1V$ , $I_{oh} = -4mA$	2 1.8	2.4		V
$V_{OL}$	Low Level Output Voltage $T_{min.} \leq T_{amb} \leq T_{max.}$	$V_{id} = -1V$ , $I_{oh} = 4mA$		300	400 450	mV
$V_{icm}$	Input Common Mode Voltage $T_{min.} \leq T_{amb} \leq T_{max.}$		0 to $V_{CC}^+ - 1.2$ 0 to $V_{CC}^+ - 1.5$			
CMR	Common Mode Rejection Ratio	$V_{ic} = V_{icm min.}$		80		dB
SVR	Supply Voltage Rejection Ratio	$V_{CC}^+ = 5V$ to $10V$		75		dB
$T_{plh}$	Response Time Low to High Overdrive = 5mV TTL input	$V_{ic} = 0V$ , $f = 10kHz$ , $C_L = 50pF$	1.5 0.7			$\mu s$
$T_{phl}$	Response Time High to Low Overdrive = 5mV TTL input	$V_{ic} = 0V$ , $f = 10kHz$ , $C_L = 50pF$	2.2 0.15			$\mu s$

**Note 1** : The specified offset voltage is the maximum value required to drive the output up to 4.5V or down to 0.3V.

**Note 2** : Maximum values including unavoidable inaccuracies of the industrial test.



**Applies to : TSM221**

```

** Standard Linear Ics Macromodels, 1993.
** CONNECTIONS :
* 1 INVERTING INPUT
* 2 NON-INVERTING INPUT
* 3 OUTPUT
* 4 POSITIVE POWER SUPPLY
* 5 NEGATIVE POWER SUPPLY
.SUBCKT TSM221C 1 3 2 4 5
*****
***** RVAR *****
.SUBCKT RVAR 20 10 IN OUT
VSENS0 IN 1 0V
R0 1 OUT 125
F0 1 OUT POLY(2) VSENS0 VSENS2 0 0 0 0 1E+08
VSENS2 20 3 0V
R2 3 10 1E+09
.ENDS RVAR
***** COMPARATOR *****
.MODEL MDTH D IS=1E-11 KF=1.050321E-32
CJO=10F
* INPUT STAGE
CIP 2 5 1.000000E-12
CIN 1 5 1.000000E-12
EIP 10 0 2 0 1
EIN 16 0 1 0 1
RIP 10 11 6.500000E+01
RIN 15 16 6.500000E+01
RIS 11 15 1.939046E+02
DIP 11 12 MDTH 400E-12
DIN 15 14 MDTH 400E-12
VOFP 12 13 DC 0.000000E+00
VOFN 13 14 DC 0
IPOL 13 0 100E-06
CPS 11 15 8.16E-09
DINN 17 13 MDTH 400E-12
VIN 17 5 0.000000E+00
DINR 15 18 MDTH 400E-12
VIP 4 18 1.200000E+00
FCP 4 5 VOFP 0.02
FCN 5 4 VOFN 0.02
FIBP 2 0 VOFN 2.000000E-08
FIBN 0 1 VOFP 2.000000E-08
* AMPLIFYING STAGE
RG1 5 19 2.8E+05
RG2 4 19 2.8E+05
DOPM 19 22 MDTH 400E-12
DONM 21 19 MDTH 400E-12
HOPM 22 28 VOUT 3000
VIPM0 28 40 -87
EIPM 40 4 4 5 42
**VIPM 28 4 150
HONM 21 27 VOUT 3000
VINM0 50 27 -114
EINM 5 50 4 5 54
**VINM 5 27 150
DOP 19 25 MDTH 400E-12
VOP 4 25 1.097
DON 24 19 MDTH 400E-12
VON 24 5 1.097
FIP 0 19 VOFP 104
FIN 0 19 VOFN 104
EOUT 26 23 19 5 1
VOUT 23 5 0V
XOUT 4 5 26 3 RVAR
*ROUT 26 3 62.5
.ENDS

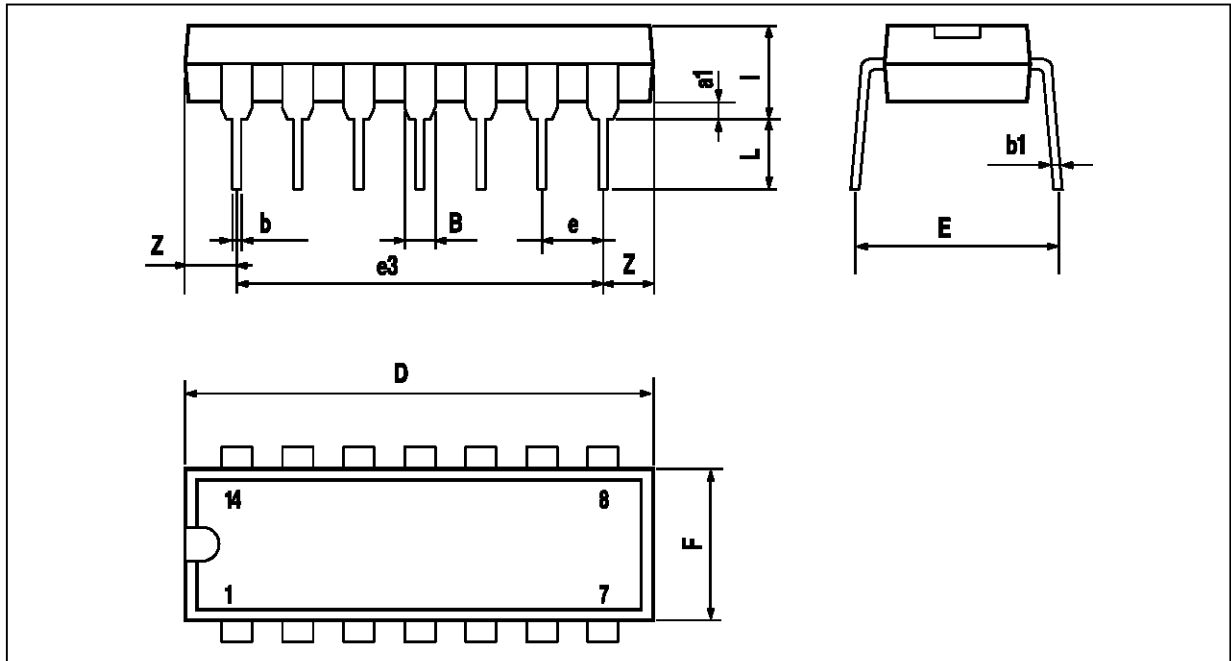
```

**ELECTRICAL CHARACTERISTICS**  $V_{CC}^+ = 3V$ ,  $V_{CC}^- = 0V$ ,  $T_{amb} = 25^{\circ}C$ , unless otherwise specified

Symbol	Conditions	Value	Unit
$V_{io}$	$V_{ic} = 1.5V$	0	mV
$I_{CC}$	No load, per operator	7	$\mu A$
$V_{icm}$		0 to 1.8V	V
$V_{OH}$	$V_{id} = 1V$ , $I_{OH} = -4mA$	2.4	V
$V_{OL}$	$V_{id} = 1V$ , $I_{OH} = -4mA$	300	mV
$t_{PLH}$	Overdrive = 5mV	1.5	$\mu s$
$t_{PHL}$	Overdrive = 5mV	2.2	$\mu s$

**TSM221**

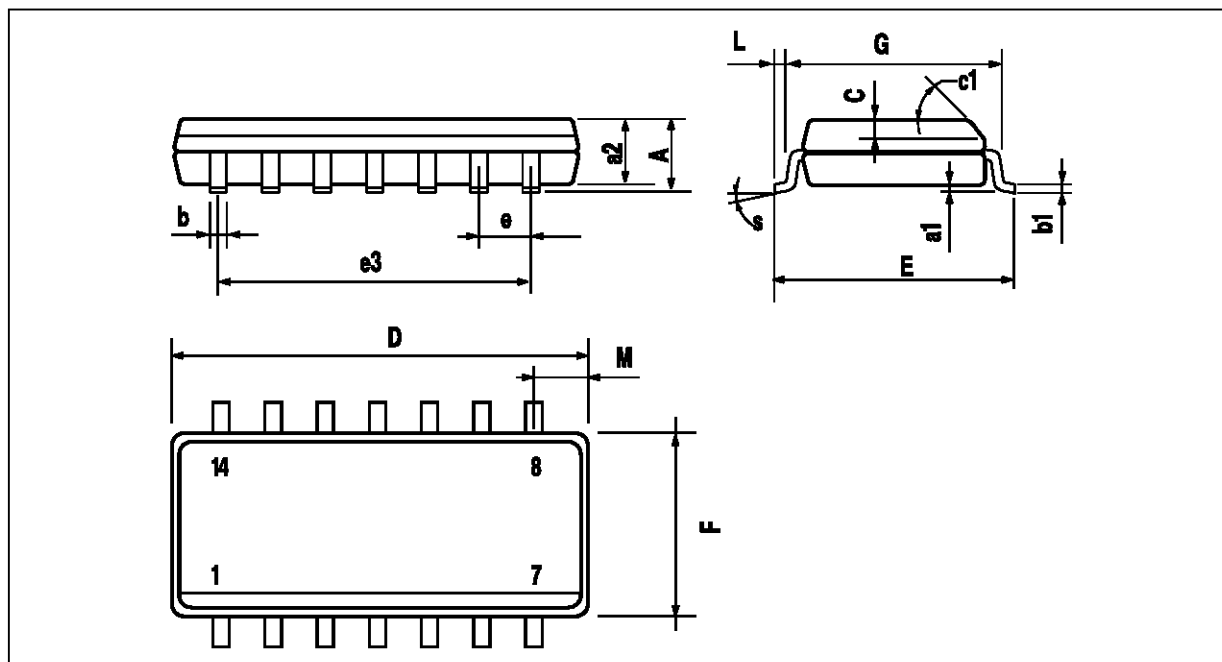
**PACKAGE MECHANICAL DATA**  
14 PINS - PLASTIC DIP



Dim.	Millimeters			Inches		
	Min.	Typ.	Max.	Min.	Typ.	Max.
a1	0.51			0.020		
B	1.39		1.65	0.055		0.065
b		0.5			0.020	
b1		0.25			0.010	
D			20			0.787
E		8.5			0.335	
e		2.54			0.100	
e3		15.24			0.600	
F			7.1			0.280
i			5.1			0.201
L		3.3			0.130	
Z	1.27		2.54	0.050		0.100

## PACKAGE MECHANICAL DATA

14 PINS - PLASTIC MICROPACKAGE (SO)



Dim.	Millimeters			Inches		
	Min.	Typ.	Max.	Min.	Typ.	Max.
A			1.75			0.069
a1	0.1		0.2	0.004		0.008
a2			1.6			0.063
b	0.35		0.46	0.014		0.018
b1	0.19		0.25	0.007		0.010
C		0.5			0.020	
c1	45° (typ.)					
D	8.55		8.75	0.336		0.334
E	5.8		6.2	0.228		0.244
e		1.27			0.050	
e3		7.62			0.300	
F	3.8		4.0	0.150		0.157
G	4.6		5.3	0.181		0.208
L	0.5		1.27	0.020		0.050
M			0.68			0.027
S	8° (max.)					

Information furnished is believed to be accurate and reliable. However, SGS-THOMSON Microelectronics assumes no responsibility for the consequences of use of such information nor for any infringement of patents or other rights of third parties which may result from its use. No license is granted by implication or otherwise under any patent or patent rights of SGS-THOMSON Microelectronics. Specification mentioned in this publication are subject to change without notice. This publication supersedes and replaces all information previously supplied. SGS-THOMSON Microelectronics products are not authorized for use as critical components in life support devices or systems without express written approval of SGS-THOMSON Microelectronics.

© 1997 SGS-THOMSON Microelectronics – Printed in Italy – All Rights Reserved

SGS-THOMSON Microelectronics GROUP OF COMPANIES  
 Australia - Brazil - Canada - China - France - Germany - Hong Kong - Italy - Japan - Korea - Malaysia - Malta - Morocco  
 The Netherlands - Singapore - Spain - Sweden - Switzerland - Taiwan - Thailand - United Kingdom - U.S.A.

ORDER CODE: